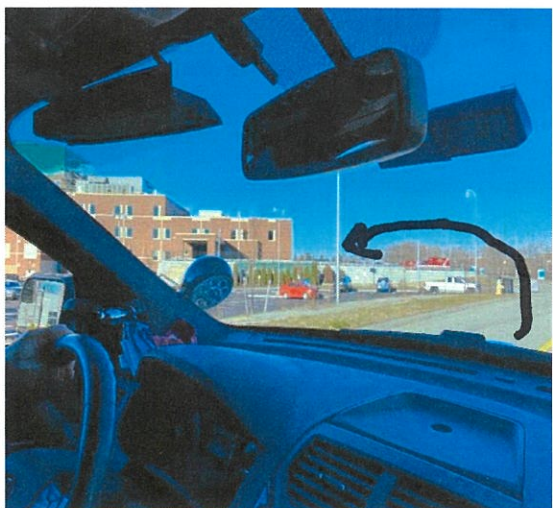


\* STARTING TUES, JAN 4<sup>TH</sup> @ 0400 hrs \*



- TAKE EX27 5A
- LEFT @ 226 HTS AND GO OVER BRIDGE
- 175 FORE RIVER PARKWAY ON LEFT
- DRIVE PAST THE NEW MERCY TO 226 HTS
- TAKE (L) AT 226 HTS AND FOLLOW FENCE BEHIND THE NEW MERCY TO BACK OF HOSPITAL



USE ENTRANCE AFTER THE RETAINING WALL



S26N @ AMBULANCE ENTRANCE



VIEW AS YOU TURN INTO OFF-LOAD AREA



Back up under the canopy



Entry located under the canopy



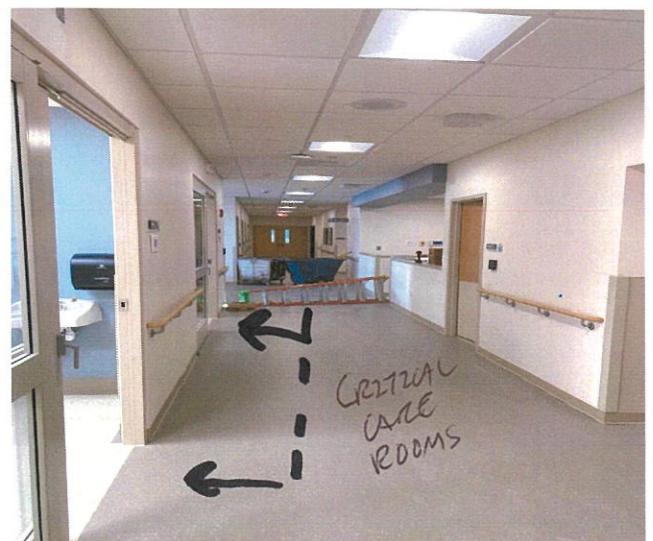
View looking at ambulance entry doors from back of ED



View standing to the left of the entry doors



Standing to the left of the entry doors (#9, #10, #11, etc)



View standing to the right of entry doors (Trauma Bays)